

**360°
PROTECTION**

ENHANCE YOUR CUSTOMER'S SAFETY AND BOOST YOUR PROFIT MARGIN

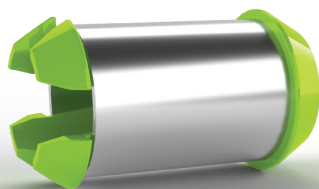
44,800 home fires per year involve electrical failure or malfunction.¹

22,580 electrical fires start behind the wall each year.¹

50%-75% of home electrical fires are caused by arc fault conditions.²

ARC FAULT CIRCUIT INTERRUPTERS (AFCI) ARE A FIRE PREVENTION MEASURE— THEY DO NOT SOLVE THE ROOT CAUSE OF ARC FAULTS

PREVENT ARC FAULTS FROM DEVELOPING BEHIND THE WALL BY SOLVING FOR THE ROOT CAUSE: Wire Damage



- 360-degree wire protection from screws, nails & drill bits.
- Smooth-contoured design protects wire insulation from scraping against abrasive stud-holes.
- Insert by hand, in every stud hole. No tools required.

COMPLIES WITH NFPA 70 SECTION 300.4 (A) NATIONAL ELECTRICAL CODE

- Reduce call-backs to diagnose, locate and fix hidden Arc Faults— Prevents AFCI trips due to wire damage.
- Eliminate the unnecessary time spent fixing drywall imperfections caused by nail plate requirements.
- A simple & economical opportunity to reassure your client that their house is in good hands.



500 Cleveland St S
Cambridge MN 55008
320.438.2688

 www.ez-ess.com



¹Source: Home Electrical Fires, National Fire Protection Association (NFPA). Richard Campbell, 2019

²Source: Causes of Electrical Fires: The Hidden Dangers of Arc Faults Siemens Industry Inc., 2011