

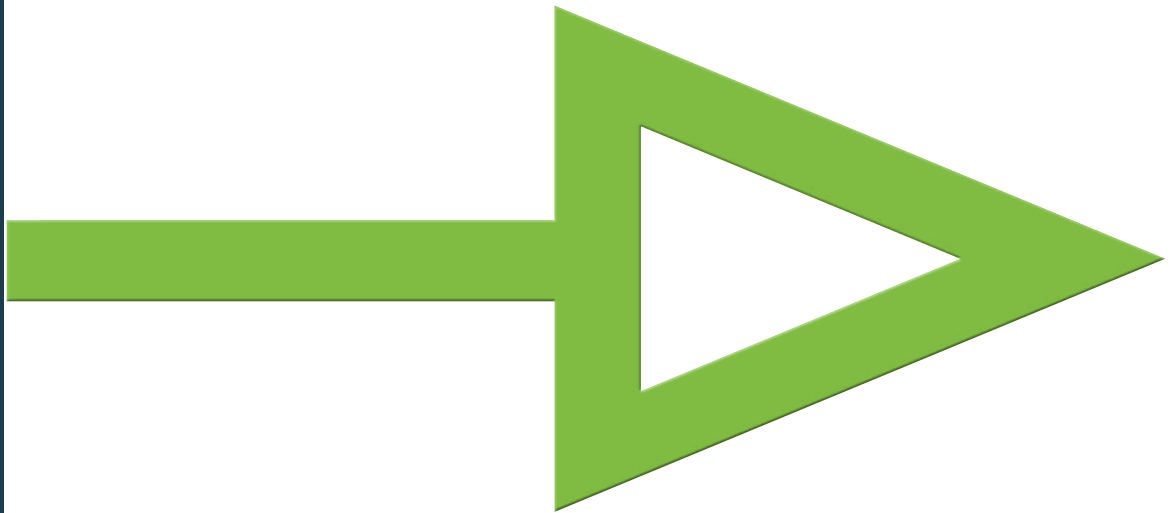
2022
1ST EDITION

**HOW WOULD YOU MOUNT A BOX
WITHOUT SCREWS OR NAILS?**



e^z

**PRODUCT
CATALOG**



contents



{ e ^z mount → [NEW WORK]	4
{ e ^z gang	5
{ e ^z gang assemblies	6
{ e ^z stack	7
{ e ^z guard	8
{ e ^z guide	9



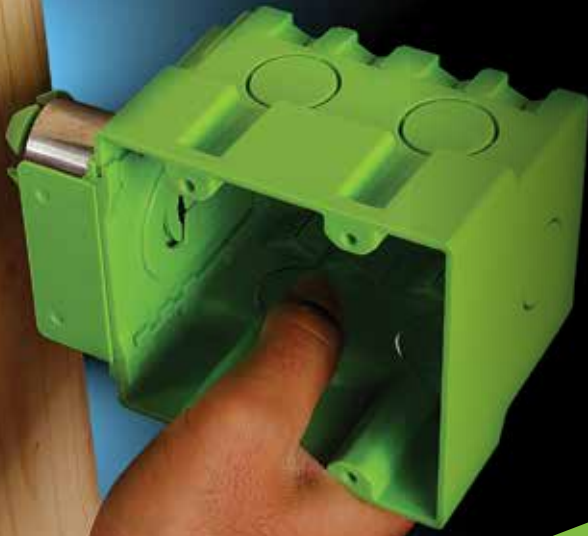
NEW WORK BOXES

single gang nail-on boxes.....	10
single gang bracket mount.....	11
double & triple gang nail-on.....	11
round ceiling boxes.....	12



OLD WORK BOXES

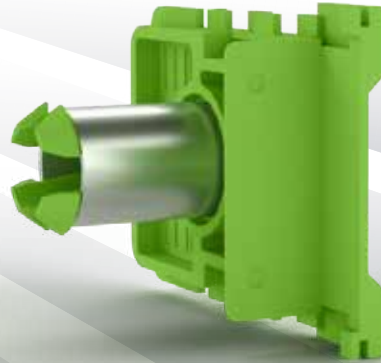
single gang screw clamp mount.....	13
single gang screw clamp mount.....	14
rv single gang screw clamp mount	14
single gang flange screw mount.....	14
round ceiling clamp mount.....	15
round cover.....	15



**INSTALLS
WITHOUT SCREWS OR NAILS**



**Arc Fault Protection—
Providing You With Peace of Mind.**

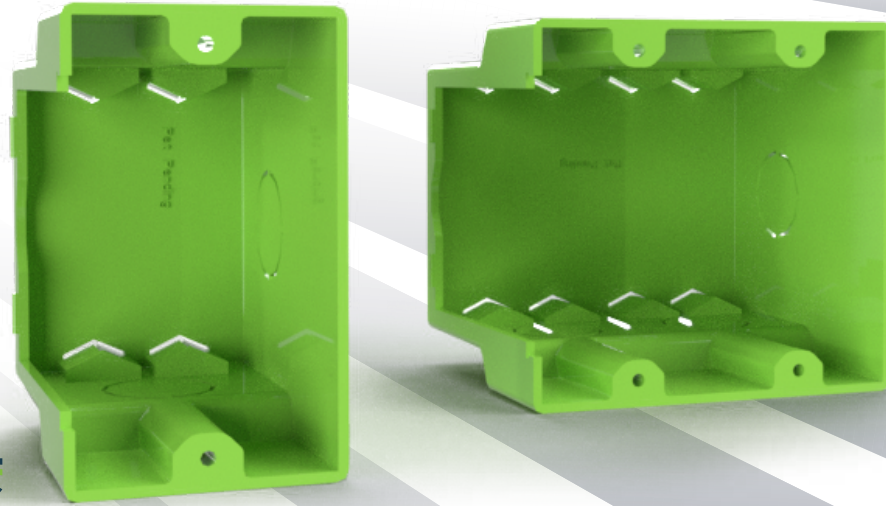


- Mounts {e^zstack and {e^zgang boxes to stud-holes without the use of tools or fasteners.
- Easily removable and re-mountable when changes arise.
- Adjustable depth accommodates common wall thicknesses without the use of tools.
- Steel sleeve promises 360-degree wire protection.
- Built in wire retainer when entering through tube.

MOUNT YOUR BOX BEFORE THE OTHER GUY CAN REACH FOR HIS HAMMER

PART NUMBER	DESCRIPTION	TUBE LENGTH	AVAILABLE
1015	EZ MOUNT – SINGLE STUD	1 STUD	YES
1039	EZ MOUNT – DOUBLE STUD	2 STUD	COMING SOON
1040	EZ MOUNT – TRIPLE STUD	3 STUD	COMING SOON

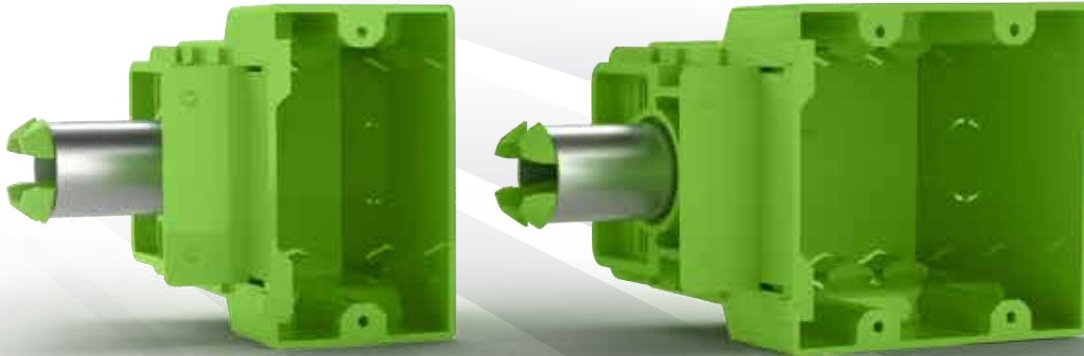
{e^z gangTM



- Works in tandem with {e^zmount} .
- Male detents mate with the {e^zmount} adjustable female detents.
- Variety of entry/exit points including circular knock-outs to accommodate any situation.
- Available to purchase without {e^zmount} to make inventory management easier.

PART NUMBER	DESCRIPTION	VOLUME (CU IN)	AVAILABLE
1016	BOX, SINGLE GANG, CONVENTIONAL	20	YES
1017	BOX, DOUBLE GANG, CONVENTIONAL	41	YES
1018	BOX, TRIPLE GANG, CONVENTIONAL	COMING SOON	COMING SOON
1019	BOX, QUAD GANG, CONVENTIONAL	COMING SOON	COMING SOON

{ e^z gangTM assemblies



* single gang box shown with { e^zmount

* double gang box shown with { e^zmount



- Includes { e^zmount preassembled for mounting boxes in one smooth motion.
- Male detents mate with the { e^zmount adjustable female detents.
- Available to purchase with { e^zmount preassembled to make estimating, job planning, and purchasing easier.

PART NUMBER	DESCRIPTION	TUBE LENGTH	AVAILABLE
1020	BOX ASSEMBLY, SINGLE GANG, CONVENTIONAL W/ EZ MOUNT ASSEMBLY	1 STUD	YES
1021	BOX ASSEMBLY, DOUBLE GANG, CONVENTIONAL W/ EZ MOUNT ASSEMBLY	1 STUD	YES
1022	BOX ASSEMBLY, TRIPLE GANG, CONVENTIONAL W / EZ MOUNT ASSEMBLY	1 STUD	COMING SOON
1023	BOX ASSEMBLY, QUAD GANG, CONVENTIONAL W / EZ MOUNT ASSEMBLY	1 STUD	COMING SOON
1031	BOX ASSEMBLY, SINGLE GANG, CONVENTIONAL W/ EZ MOUNT ASSEMBLY	2 STUD	COMING SOON
1032	BOX ASSEMBLY, DOUBLE GANG, CONVENTIONAL W/ EZ MOUNT ASSEMBLY	2 STUD	COMING SOON
1033	BOX ASSEMBLY, TRIPLE GANG, CONVENTIONAL W / EZ MOUNT ASSEMBLY	2 STUD	COMING SOON
1034	BOX ASSEMBLY, QUAD GANG, CONVENTIONAL W / EZ MOUNT ASSEMBLY	2 STUD	COMING SOON
1035	BOX ASSEMBLY, SINGLE GANG, CONVENTIONAL W/ EZ MOUNT ASSEMBLY	3 STUD	COMING SOON
1036	BOX ASSEMBLY, DOUBLE GANG, CONVENTIONAL W/ EZ MOUNT ASSEMBLY	3 STUD	COMING SOON
1037	BOX ASSEMBLY, TRIPLE GANG, CONVENTIONAL W / EZ MOUNT ASSEMBLY	3 STUD	COMING SOON
1038	BOX ASSEMBLY, QUAD GANG, CONVENTIONAL W / EZ MOUNT ASSEMBLY	3 STUD	COMING SOON

{e^zstackTM



*four single {e^zstack} boxes shown assembled with {e^zmount}



- Stack multiple boxes together for multi-gang applications.
- Add or remove boxes on the fly, when changes arise.
- Naturally provides the required divider for dual voltage side by side.
- Circular knock-out is included to accommodate single voltage scenarios.
- Accepts standard face plates.

LIKE A SEAT BELT, {e^zstack} BOXES UNMISTAKABLY CLICK INTO PLACE, SIGNALING THAT YOU HAVE SECURED THEM CORRECTLY.

Part Number	Description	Volume (cu in)	Available
1008	BOX, SINGLE GANG, STACKABLE	18	COMING SOON



PREVENTS ARC FAULTS FROM DEVELOPING BEHIND THE WALL BY SOLVING FOR THE ROOT CAUSE: WIRE DAMAGE

- The **{ezguard}** is a PVC insulated steel bushing that fastens to stud holes by hand.
- Provides 360-degree wire protection from drill bits, screws, & nails at every stud a wire passes through.
- Smooth contoured design protects wire insulation from scraping against abrasive stud holes and makes pulling wire easier.
- Outside Diameter: 1 1/8". Inside Diameter: 7/8".
- Also protects up to 1/2" water lines.



Part Number	Description	Mount Stud Count	Available
1014	EZ GUARD WIRE PROTECTOR SINGLE STUD	1 STUD	YES
1041	EZ GUARD WIRE PROTECTOR DOUBLE STUD	2 STUD	COMING SOON
1042	EZ GUARD WIRE PROTECTOR TRIPLE STUD	3 STUD	COMING SOON

{e^z guideTM



- Drill the perfect hole location for {e^zmount new work boxes and {e^zguards.
- Fasten your measuring device and set it to the desired height you wish to drill your holes.
- Accepts most tape and laser measurement devices.

Part Number	Description	Available
1026	EZ GUIDE – HANDHELD DRILL GUIDE TOOL	YES
1030	EZ GUIDE – CONTRACTOR 90 DEGREE DRILL GUIDE TOOL	COMING SOON



single gang nail-on



Part Number	Description	Volume (cu in)
SNW-118	1G 18" NAIL ON PVC BOX	18



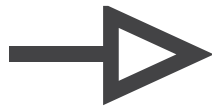
Part Number	Description	Volume (cu in)
SNW-120	1G NAIL ON PVC BOX	20



Part Number	Description	Volume (cu in)
SNW-122	1G DEEP NAIL ON PVC BOX	22



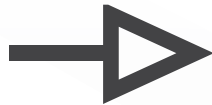
Part Number	Description	Volume (cu in)
SNW-122 HD	HEAVY DUTY 1-GANG BOX	22



single gang bracket mount



Part Number	Description	Volume (cu in)
SNW-B108	1G 8" PVC BOX W/BRKT	8



double & triple gang nail-on



Part Number	Description	Volume (cu in)
SNW-232	2G NAIL ON PVC BOX	32



Part Number	Description	Volume (cu in)
SNW-344	3G 44" PVC BOX W/NAIL	44



round ceiling boxes



Part Number	Description	Volume (cu in)
SNW-R18	18 CU CEILING BOX NEW WORK	18



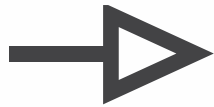
Part Number	Description	Volume (cu in)
SNW-RB20	CEILING BOX W/ HANGER BAR	20



Part Number	Description	Volume (cu in)
SNW-R20	ROUND 20" NAIL ON PVC BOX	20



Part Number	Description	Volume (cu in)
SNW-R25 HD	HEAVY DUTY NAIL ON CEIL BOX	25



single gang screw clamp mount



Part Number	Description	Volume (cu in)
SOW-114	1G OLD WORK PVC BOX	14



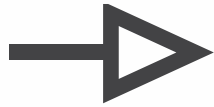
Part Number	Description	Volume (cu in)
SOW-118 HD	HEAVY DUTY 1-GANG OLD WK BOX	18



Part Number	Description	Volume (cu in)
SOW-120	1G OLD WORK BOX	20



Part Number	Description	Volume (cu in)
SOW-225	2G 25" PVC OLD WORK BOX	25



single gang screw clamp mount



Part Number	Description
SOW-LV1	LOW VOLTAGE MOUNT BRACKET



Part Number	Description	Volume (cu in)
RVOW-117-OFF	RV OLD WORK 1G 17" OFFSET PVC BOX	17



single gang flange screw mount



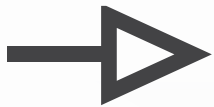
Part Number	Description	Volume (cu in)
SOW-F108	1G 8" PVC BOX W/FLANGE	8



round ceiling clamp mount



Part Number	Description	Volume (cu in)
SOW-R18	OLD WORK CEILING BOX	18



round cover



Part Number	Description	Shape
SCR-460	ROUND BLANK PVC COVER	ROUND

 www.ez-ess.com



EZ Electrical System Solutions is family-owned and operated in Minnesota.

Our goal is to become a trusted, problem-solving resource for the electrical industry.

We are driven to smooth-out those repetitive friction-points for people working in the electrical industry.



Typically, we eliminate friction by designing and manufacturing easier and safer products, like our EZ SERIES product line.



New product development is not the only tool in our toolbox. We also contribute our own line of traditional boxes to the industry to serve those entities experiencing supply chain friction.

Stay tuned as we continue to expand our current product lines, and launch new easier, safer, and systematic solutions for the electrical industry.



Are you dealing with friction in your day-to-day? Looking for a solution?

**500 Cleveland St S
Cambridge MN 55008
320.438.2688**

